



£405,000

THE DETAILS



6 Ashbourne Grove

Douglas, Isle Of Man

£405,000

call in today or visit www.blackgracecowley.com for more details

e: hello@blackgracecowley.com | w: www.blackgracecowley.com | t: +44 (0) 1624 645 555

a: 51 Victoria Street, DOUGLAS, Isle of Man, IM1 2LD



PROPERTY DETAILS FOR

6 Ashbourne Grove, Douglas, Isle Of Man

e: hello@blackgracecowley.com | w. blackgracecowley.com | t: +44 (0) 1624 645 555

a: 51 Victoria Street, DOUGLAS, Isle of Man, IM1 2LD



PROPERTY DETAILS FOR

6 Ashbourne Grove, Douglas, Isle Of Man

THE DESCRIPTION

THE PROPERTY



PROPERTY DETAILS FOR

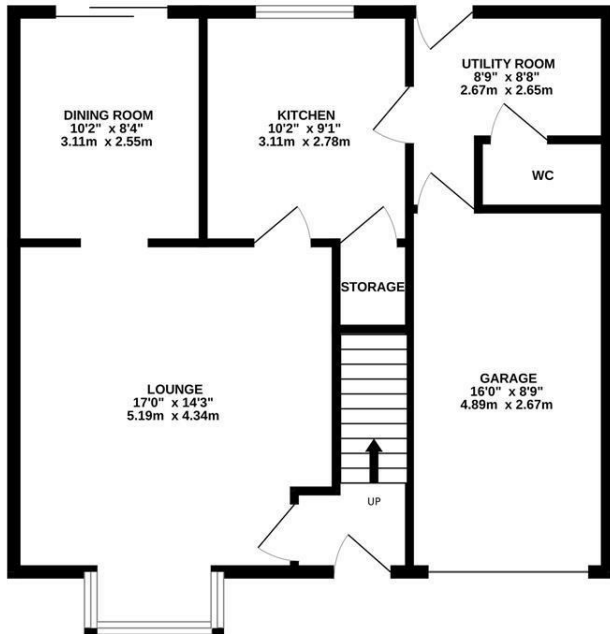
6 Ashbourne Grove, Douglas, Isle Of Man

e: hello@blackgracecowley.com | w. blackgracecowley.com | t: +44 (0) 1624 645 555

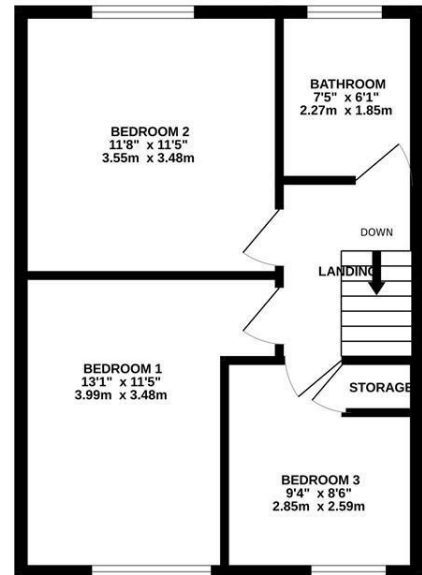
a: 51 Victoria Street, DOUGLAS, Isle of Man, IM1 2LD

FLOOR PLAN

GROUND FLOOR
663 sq.ft. (61.6 sq.m.) approx.



1ST FLOOR
433 sq.ft. (40.2 sq.m.) approx.



TOTAL FLOOR AREA : 1095 sq.ft. (101.8 sq.m.) approx.

Whilst every attempt has been made to ensure the accuracy of the floorplan contained here, measurements of doors, windows, rooms and any other items are approximate and no responsibility is taken for any error, omission or mis-statement. This plan is for illustrative purposes only and should be used as such by any prospective purchaser. The services, systems and appliances shown have not been tested and no guarantee as to their operability or efficiency can be given.
Made with Metropix ©2026